

# Sherwood Grange Public School

Bruce Street, Merrylands West NSW 2160

T: 9632 9447 F: 9892 2715 [www.sherwoodgr-p.schools.nsw.edu.au](http://www.sherwoodgr-p.schools.nsw.edu.au)



Our focus is on **EVERY CHILD**

February 2018

## *From the Principal ...*

What a wonderful start to the school year we have had.

As you know, at Sherwood Grange our focus is on **EVERY CHILD** and as a learning community our purpose is to meet the academic, social, emotional, creative and physical needs of **EVERY CHILD** in our care.

This philosophy underpins all of our decision making, planning and day to day activities. At our school we are not only focused on academic progress, but the wellbeing of the "whole child". This is the case for **EVERY CHILD** in every classroom across our school.

### Staffing

I would like to take this opportunity to provide you with detailed information about our teaching and administration staff and what each person's role is within the school.

There is little change to the composition of our teaching staff this year. Mrs Diaz has taken a position as an English as a Second Language teacher at a nearby school, a role she has specific qualifications for and we wish her the very best. We are very happy to say that Miss Swift, who replaced Mrs Mobbs when she started her Maternity Leave last year, is staying with us and the newest member to the team is Miss Mapapalangi who was a highly valued casual relief teacher at our school last year.

Currently we have 348 students, our highest number in my 12 years here. The staffing allocation assigned to our school has allowed us to retain 14 classes.

### Class teachers:

Class	Teacher
KD	Mrs Dennis
KE	Miss Kim
KR	Miss Reinhard
2/1K	Mrs Khouzam
2/1L	Mrs Lopez
2/1M	Miss Mapapalangi
2/1S	Mrs Straub
4/3F	Miss D Fares
4/3K	Mr Koutzas
4/3G	Mrs Ghantous
4/3S	Miss Swift
6/5D	Miss Montgomerie
6/5M	Mrs Manning (Mon, Tues, Wed) Miss H Fares (Thurs and Fri)
6/5T	Miss Thomson

### Support/Specialist teaching roles:

Mrs Parnis	Teacher Librarian Mon, Tues, Wed, Thurs
Miss H Fares	Release from Face to Face (RFF) & Intervention Support Mon, Tues, Wed
Mrs Bisignani	Release from Face to Face (RFF) & Intervention Support Wed, Thurs
Mrs Ugarte	Release from Face to Face (RFF) & Intervention Support Mon, Tues, Wed, Thurs
Mrs Nada Madjar	School Counsellor Thursday

### Student Support:

Mrs Williams	School Learning Support Officer (SLSO)
Ms Walsh	School Learning Support Officer (SLSO)
Mrs A Fares	School Learning Support Officer (SLSO)
Mrs Whale	Wellbeing Support Officer (WSO) Mon, Tues

## Administration Team:

Mrs McManus	Business and Administration Manager
Mrs Crawley	Relieving Administration Manager Wednesday
Ms Gullen	School Administration Officer (SAO)
Mrs Lillas	School Administration Officer (SAO) Mon, Tues
Mrs Williams	School Administration Officer (SAO)
Mr Jeff Sayers	General Assistant (GA) Mon, Tues, Wed, Thurs

## Leadership Team:

Teacher	Role
Mr Shearer	Assistant Principal Yr 3-4 Student Wellbeing & Learning Support K-6
Miss Amargianitakis	Assistant Principal K-2 Teaching & Learning Leader K-6
Mrs Manning	Assistant Principal Yr 5-6 Stage 3 Teacher

Warm regards,

*Vicki Robertson*

## Upcoming Events

## Term 1 Week 6

Monday 5/3	Debating Gala Day
Wednesday 7/3	Peter Wynn Rugby Shield

## Week 7

EVERY CHILD MATTERS WEEK	
Wednesday 14/3	School Photo Day

## Week 8

Tuesday 20/3	P&C Meeting 6.30pm
Wednesday 21/3	Crazy Hair Day

## Week 9

Wednesday 28/3	Easter Fair
Friday 30/3	Good Friday

## Week 10

Monday 2/4	Easter Monday
------------	---------------

## Sun Safety Spotlight

## NO SCHOOL HAT, NO PLAY

This rule is an integral part of our Sun Safety Strategy.



If a student is not wearing a school hat he/she is expected to sit in a designated spot in the shade.

To maintain our high standards at Sherwood Grange every student is expected to wear a **school hat**.

## Anaphylaxis

The number of children with food allergies in Australia is increasing and it is estimated that 1 in 20 have a food allergy and 1 in 50 have a peanut allergy.



The most common food allergies are peanuts, tree nuts (walnuts, almonds, and cashews), cow's milk, soy, seafood and eggs.

We encourage you **not to** send the following things to school with your children:

- ✗ Peanut butter sandwiches
- ✗ Nutella sandwiches and
- ✗ Biscuits/Bars that contain nuts

At school we teach children:

- Not to swap food
- To wash their hands after eating
- To tell the teacher if they are worried about particular foods
- Know which friends have an allergy

We ask that you discuss and reinforce this information with your children at home.

## Communication Tips

Parents talk to me often about how little their child shares with them about school. Here's my top five tips to get them talking.

1. Sharing often happens while kids are focussed on something else i.e. drawing a picture, helping prepare dinner, playing LEGO.
2. Your questions need to be as open as possible. "Tell me about something exciting you did today?" "What did you read about today?" "What's your favourite thing to play at recess/lunch?" "What are you looking forward to doing again tomorrow in the classroom?"
3. Remember children (especially smaller ones) don't often 'make friends' straight away and if they do they're not likely to remember names.
4. Interrogations often end in frustration, so try to be patient and not bombard your child even when you're longing for details about their day.
5. Create a regular habit at dinner time going around the table and sharing either 3 happy things or a high and low from each person's day.

Kim Whale – Wellbeing Support Officer (WSO)

## Student Safety - Dismissal

At Sherwood Grange student safety and wellbeing is always our first concern. In order to keep student dismissal safe and smooth we ask all K-2 parents to enter via the middle gate (near the car park) and wait outside the canteen area. Teachers will not dismiss students to parents waiting at the top gate. Parents of students in Years 3-6 may collect students at the bottom gate or safely outside the school grounds. We thank all parents for working with us to keep dismissal time as smooth and easy as possible.

We would like to remind parents that all students must be collected at **2:55pm**.

## Library News



Welcome back to Library in 2018!

It is great to see so many students bringing their library bags to school and already borrowing books.

If you do not have a material library bag, they are available for sale through the new uniform suppliers or you can sew one of your own design or purchase novelty bags from many stores. Just make sure the bag is big enough to fit books into and has your name on it.

Well done also to those students who found their 'lost' library books during the holidays and have returned them to school. Remember you cannot borrow any books if you have an overdue loan.

I am looking forward to an exciting year in the library.

Mrs Parnis  
Teacher Librarian

## Book Club



Sherwood Grange Public School participates in Scholastic Book Club. Sales help raise funds for school and library resources.

Twice a term students receive a brochure which contains books and other items students may purchase that are at their reading and interest level. The purchase of items is entirely optional.

If you would like to purchase anything, you need to place the completed order form found in the brochure and the correct payment in an envelope and put them into the **BLUE BOX** near the School Office. The closing date for each brochure is displayed in your child's classroom. Orders can also be paid online through the Scholastic LOOP system. (See the order form for details.)

Orders are usually received within two weeks of the closing date.

We hope you can take the opportunity to participate in Book Club.

Mrs Parnis  
Teacher Librarian

## Fence and Access Changes

On entering our school you may notice a few changes with the fencing in the school grounds. During 2017 the school Workplace Health and Safety Committee conducted an onsite audit that included representatives from both the Assets and Safety & Security Departments to assess potential risks involving pedestrian traffic in the car park.

As a result we invited quotes to update the fencing from the front of the school, along the side of the car park down to the path leading to the library and up to the hall. A combination-locked gate for "Staff Use Only" replaces the old swing gate near the Canteen.

For students and parents moving from the top to the bottom of the school, including access to the Administration Building is now, and will remain via the "Safe Path".

The low silver fencing that was in place has been relocated up in front of the OOSH and Hall to allow the much depleted grass a chance to regrow and reduce erosion in the area.

Another change that you will see going forward is the installation of an electronic-access sliding driveway gate as well as video intercom access via a pedestrian gate to be used during the school day. These upgrades will help ensure the safety of our students, staff and visitors to the school.

Pedestrian gates will be open until 9.20am each morning and will reopen at 2.40pm each afternoon. In between these hours access to the school will be via the pedestrian gate after buzzing the video intercom. The gate will be released by Administration staff from inside the school.

We are all thrilled to see the work underway and while we know it is very exciting to watch construction works in action, we remind you and your children to adhere to safety signs and exclusion areas in compliance with Work & Safety obligations to ensure the safety of all.

Mrs Lisa McManus  
Business & Administration Manager



## P&C News

We would like to extend a warm welcome to all the new families to Sherwood Grange and to all families who have returned for another year, welcome back.

As you may be aware we have many fundraising events held within the school year and we extend an invitation to everyone to participate in our P&C events. All P&C events/activities are run by volunteers. Without the volunteers we couldn't make these events happen. We would love to see more parents come on board to help out at the events.

It is a very rewarding way to get involved with our children's school lives. If you would like to get involved and can spare the time to help out at any time during the year please email us at [sherwoodgrangepandc@gmail.com](mailto:sherwoodgrangepandc@gmail.com) or come and find us in the playground at drop off or pick up times.

### Colour Run

The prizes for those children who raised more than \$10 sponsorship money for the Colour Run were distributed at the end of Term 4 in 2017. Hopefully, everyone got to enjoy their prizes over the school holidays. Thanks again to all who sponsored the children in this event.

### Uniform Shop

As per a recent SkoolBag notice the onsite P&C Uniform Shop still has some items left for sale. The shop will open on Friday mornings between 8.30 am and 9.30 am. If we don't have stock it will be available for purchase from Oz Fashions. Details on how to download the app and how to order are included on the SkoolBag update. Should you have any queries please feel free to ask us for help. We have sample sizes of the Oz Fashions uniform available for trying on at the onsite P&C Uniform Shop on Friday mornings.

Please note that Merrylands Uniform and Workwear shop on Merrylands Road is no longer a supplier of Sherwood Grange uniforms.

### Payments to the P&C

The P&C cannot accept payments made through the school's online payment system. Please ensure that all P&C payments are made through the **BLUE BOX** in the main office with either the exact cash or a cheque made payable to Sherwood Grange P&C. We are unable to accept Credit Card or EFTPOS. This includes payments for uniforms at the onsite shop.

### Athlete's Foot

The Athlete's Foot stores in Parramatta and Merrylands provide sponsorship to Sherwood Grange Public School in the form of a \$5.00 donation for every pair of shoes sold. Please remember to mention Sherwood Grange Public School when purchasing shoes from these stores.

### Dates to remember:

Next P&C Meeting – Tuesday, 20<sup>th</sup> March 2018 at 6:30pm in the Staff Room which is located in the Administration Building. All parents and carers are welcome to attend.

Thanks

Dee  
P&C President

## Hats for Sale

The Administration Office has school hats which can be purchased.

Bucket style hats cost \$15 (Compulsory for Kindergarten and Year 1 students)

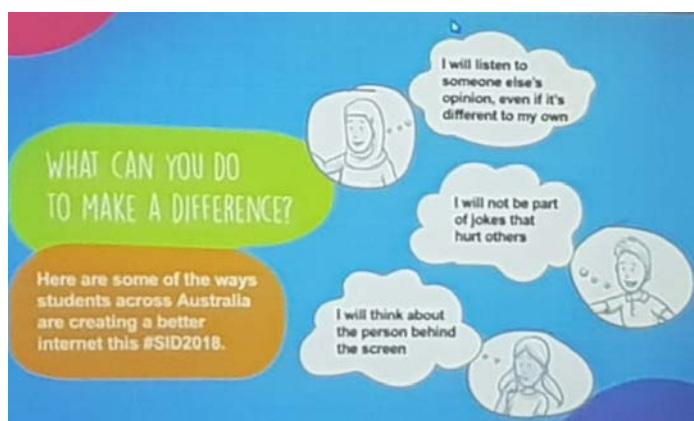
Caps costs \$12 (Year 2-6 students can wear a cap or a bucket hat)

Please bring the correct money if you or your child would like to purchase a hat.



**Safer Internet Day (SID)** is an annual, worldwide event held on Tuesday 6 February 2018 to help encourage a better internet, with this year's theme 'Create, connect and share respect: A better internet starts with you'.

At Sherwood Grange we acknowledged and celebrated the event with an interactive presentation held in the hall by the *Office of the eSafety Commissioner*. All students in Years 3-6 made a pledge for a safer internet.



## Year 6 Ice Blocks



During Term 1 and Term 4 every year, Year 6 students sell Zooper Doopers for 50 cents at lunchtime whenever there is a particularly hot day.

You might like to consider allowing your child/ren to have 50c with them on hot days for when Zooper Doopers are available.

## Birthdays... Cup Cakes Only



We would like to remind you that we are happy to celebrate birthdays within classrooms by singing "Happy Birthday" and handing out cup cakes (enough for each child in the class). Anything else, however, is not appropriate within the school setting.

We ask that you do not send candles, party hats, cakes that need to be cut, balloons, lolly bags etc. Please remember, cupcakes only.

## No dogs on School Property



Dogs can be great family pets, and many children love their family dogs. But children always need constant, close supervision when they're near dogs to prevent dog bites and other injuries.

As we can't always be sure how dogs and children will respond to each other. **Dogs are not allowed on the school grounds at any time**, even if the dog is on a leash.

## Skoolbag App Instructions



Our school has an app called Skoolbag which is an iPhone and Android App to help us communicate more effectively with our community. This will be used in conjunction with our website which will still be updated on a weekly basis. Our aim is to increase our communication whilst at the same time reducing our use of paper.

We are kindly asking parents to install our **free** Skoolbag School App.

### For iPhone and iPad users:

1. Click the "App Store" icon on your Apple device.
2. Type your school name into the search bar, using suburb name will help.
3. If iPhone, you will see your school appear, click "Free" then "install".
4. If iPad, change the drop list to "iPhone Apps", your school will then be visible, click "Free" then "install".
5. When installed click "Open".
6. Select "OK" to receive push notifications, when asked.
7. Click the "More" button on the bottom right of the App, then "Setup".
8. Toggle on the Push Categories that are applicable for you.



### For Android users:

You must first have signed up with a Google Account before installing the app.



1. Click the "Play Store" button on your Android Device.
2. Click the magnifying glass icon at the top and type in your school name, using suburb name will help.
3. Click the school name when it appears in the search bar.

4. Click the "Install" button.
5. Click "Accept" for various permissions (please note, we do not modify any of your personal data on your device).
6. Click "Open" when installed.
7. Click the "More" button on the bottom right of the App, then "Setup".
8. Toggle on the Push Categories that are applicable for you.

## Student Banking at School



Students will again be able to bank some savings with the Commonwealth Bank via the school Administration Office. We can only offer this service as the Commonwealth Bank sends out a representative to process the deposits and take the banking straight to the branch. In return for the school offering this service, the bank pays a donation to the school of \$5 for every 10 deposits, regardless of the amount deposited. These donations go towards improving the school playground with painted games and other additional student resources for the benefit of all.

Student Banking will again be on Thursday mornings. Either you or your child can drop the completed bank book into the Administration Office first thing in the morning each Thursday. These are to be handed over the front counter, not put in the **BLUE BOX**. Deposits are processed and books returned to students as soon as possible.

All students new to banking will be given a Starter Pack. If you are interested please complete the application online as per the instructions. If your child is not new to the school and you would like them to have a Starter Pack please contact the Office.

## What's happening at school



## World's Greatest Shave



We are proud to once again take part in the World's Greatest Shave in 2018. We have created a team called 'Sherwood Grange Public School' if you would like to join our team online and start fundraising. It can be found at the following link: <http://my.leukaemiafoundation.org.au/sherwoodgrangepublicschool>

We plan to showcase our 'shaved heads' or 'cut hair' during a special Morning Assembly in Week 8.

More information and details will be provided soon.

We look forward to this great community event.

Mr Shearer