



Sherwood Grange Public School

STAGE 1

2024 INFORMATION BOOKLET



For more information visit: <https://sherwoodgr-p.schools.nsw.gov.au>



2024 Information for Stage 1 Parents

Meet the Stage 1 Teachers

Welcome to Stage 1. Your Stage 1 teachers in 2024 are Mrs Lopez, Mrs Kean, Miss Malas, Mrs Ghantous and Miss Bradshaw. We are excited to share this learning journey with you and your child as they learn and grow in the early years of primary school. Every school year is an important stage in your child's life and we recognise that it is a privilege to develop and foster your child's academic, social, emotional and creative growth.



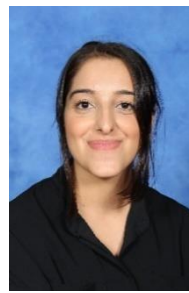
Mrs Straub
Stage 1 Assistant
Principal - Supervisor



Mrs Lopez
1/KL
Early Stage 1 Assistant
Principal



Mrs Kean
1K



Miss Malas
2M



Mrs Ghantous
2G



Mrs Ross
Deputy Principal
2/1B Supervisor



Miss Bradshaw
2/1B

Expectations and Values

Our school expectations are:

Be Safe

Be Respectful

Be Responsible

Our School Values include:

Care, Fairness, Excellence, Inclusion, Integrity and Participation.

At Sherwood Grange Public School we encourage EVERY CHILD to follow our school values, working towards becoming the best version of themselves.



2024 Information for Stage 1 Parents

We model and guide our students to care for others and the environment; show fairness towards others; work towards excellence with their learning, striving to do their best and be the best they can be; include others and participate in all activities.

We teach our students that integrity is not only about doing the right thing, it is also about owning their behaviour, making good choices (regardless of whether someone is watching or not) and accepting consequences for their actions.

Punctuality and Attendance

Students in NSW Public Schools are expected to attend every school day (unless they are legally excused) and be in class on time.

When a child arrives late to the classroom it interrupts the teaching of lessons and disturbs the learning of others. In addition, the student will have missed out on important instructions and may experience difficulty settling into the day.

Class rolls are regularly monitored by a Home School Liaison Officer (HSLO) from the Department of Education (DoE). The HSLO not only checks student absences, but also late arrivals to school. If your child's attendance or punctuality is of concern you could be contacted by the HSLO. By ensuring that your child arrives at school on time and ready to learn, you are giving your child the best possible start to a day of learning. You are also helping them to develop good habits that will be of benefit to them in the future.

Parents and carers can help foster positive attendance habits by:

- helping their child learn the importance of punctuality and routine
- ensuring their child arrives on time for the start of the school day, ready to participate in learning
- reducing disruption to learning where possible, by planning any necessary appointments outside of school time
- promptly communicating any absence to the school

Regular attendance at school is essential if students are to achieve their potential.



Absence Notes

Department of Education policy requires parents/carers to provide a written explanation for their child's absence on their return to school. This can be provided in writing or through Sentral Parent Portal.



2024 Information for Stage 1 Parents

Sentral Parent Portal



Sentral Parent Portal is our method of digital communication with families. As well as receiving important information and updates about school activities, parents and carers are able to use Sentral to explain absences and book Student Progress Meetings.

School Uniforms



Sherwood Grange Public School has high expectations for school uniform. All students are expected to be in full school uniform every day including black shoes and a school hat. School uniforms should be ordered online via the website sherwoodgrange.uniforms4u.com.au or by scanning the QR code using the password sgps2160. Oz Fashions is the only authorised supplier of our school uniform.

Additional Uniform Requirements

- Students may wear a watch – no bright colours or smart watches
- Earrings (one piercing per ear only) must be gold or silver, studs or sleepers
- No necklaces or bracelets/bangles
- No nail polish, acrylic nails or makeup
- Head scarves should be black, white or bottle green
- Long hair (boys or girls) must be tied back with bottle green, black or white hair ties
- No streaks or coloured hair.

Thank you for your support in maintaining our HIGH EXPECTATIONS.

Online Payments

Our school accepts online payments only. The only exception to our cashless system will be when students bring in the exact money required to purchase things such as Zooper Doopers (50c) and individual whiteboards (\$6.00). When we hold fundraising mufti days or events, we kindly ask for a gold coin donation.

To make an online payment:

- ✓ Visit our school website at: <https://sherwoodgr-p.schools.nsw.gov.au/>
- ✓ Click *Make a Payment*
- ✓ Complete the payment process – fill in only those fields marked with an asterisk *
- ✓ Record the receipt number on the Permission Slip.
- ✓ Return the signed Permission Slip with the receipt number to school with your child.



2024 Information for Stage 1 Parents



Crunch and Sip

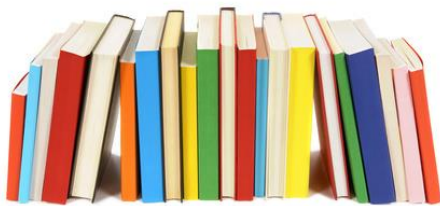
'Crunch & Sip' is a time during the day where children 're-fuel' with fruit or vegetables and water to assist with their physical and mental performance and concentration in the classroom. Each day your child is encouraged to bring cut up vegetables or fruit to school to eat.

Home-Learning

Home-Learning activities are designed to provide the opportunity for revision of skills and outcomes taught at school and promote a balanced lifestyle for students and families. It is important that you read the Home-Learning Page in your child's book carefully.



Library



Classes will have the opportunity to borrow books from 'Rhonda Parnis Library'. The library has a wide selection of picture books, comics and factual texts. Students must have their library bag with them in order to borrow books.

Sport

Sport day is on Friday and students are required to wear their full sport uniform. Our sport uniform is a Sherwood Grange sport polo shirt, black sport shorts with Sherwood Grange PS embroidery or black microfiber tracksuit pants, white socks (no anklet or "no show" sport socks) and predominantly white or predominantly black joggers (please limit bright colours).



Black tights, leggings or lycra shorts are not to be worn instead of the Sherwood Grange PS black sport shorts or tracksuit pants.



2024 Information for Stage 1 Parents



Technology

Stage 1 students will be using laptop computers in class. These devices will support teaching and learning across all Key Learning Areas and promote the development of students' ICT skills.



Birthday Celebrations

For health and safety reasons, including anaphylaxis, children are not able to bring cupcakes or lolly bags to school when it is their birthday. Instead, we celebrate birthdays by presenting children with a birthday badge. Teachers will do their best to remember when a child has a birthday, but if your child would like a birthday badge, please remind them to go to the Front Office on the day of their birthday to ensure they don't miss out.

Extra-Curricular Opportunities

Throughout the year, Stage 1 students have the opportunity to participate in a wide range of extra-curricular activities. These include:

- Choir
- Dance Group
- Swim School (Year 2)
- Zing Activ dance



Meeting the Needs of EVERY CHILD

At Sherwood Grange our purpose is to meet the academic, social, emotional, creative and physical needs of EVERY CHILD. This is achieved in a number of ways. The most common way that teachers meet the academic needs of all children is through differentiation of their class programs. This is where adjustments are made to support children who need extra help and extend those who need more of a challenge. Another way we meet the needs of all learners is through targeted small groups. Throughout the year your child may be withdrawn from class to participate in short, small group English or Maths lessons. This is not a cause for alarm, but an opportunity for your child to fine tune targeted skills in a particular focus area.



2024 Information for Stage 1 Parents

2024 Learning Overview

The table below outlines the topics that will be covered by Stage 1 across the Key Learning Areas this year.

	Term 1	Term 2	Term 3	Term 4
English	<ul style="list-style-type: none"> *Oral language and communication * Vocabulary * Phonic Knowledge * Reading fluency * Reading Comprehension *Creating written texts * Spelling * Handwriting * Understanding and responding to literature 			
Maths	<p>Working mathematically is incorporated into all areas of mathematics.</p> <p>Number and algebra:</p> <ul style="list-style-type: none"> * Representing whole numbers *Combining and separating quantities *Forming groups <p>Measurement and space:</p> <ul style="list-style-type: none"> *Geometric measure *2D spatial structure *3D spatial structure Non-spatial measure <p>Statistics and probability</p> <ul style="list-style-type: none"> *Data *Chance 			
HSIE	<p>History – The Past in the Present This topic provides a study of local history. Students explore, recognise and appreciate the history of their local area by examining remains of the past and considering why they should be preserved.</p>		<p>Geography – People and Places Students explore places across a range of scales within Australia and Australia’s location in the world. They describe connections people, including Aboriginal and Torres Strait Islander Peoples, have with places, both locally and globally. Students identify factors affecting people’s accessibility to places.</p>	
Science	<p>Materials How materials can be changed, manipulated and combined. Students have the opportunity to develop a design solution demonstrating the suitability of materials for a purpose.</p>		<p>Light, Sound and Heat Identification of light, sound and heat energy, and how they are sensed and produced.</p>	



2024 Information for Stage 1 Parents

	Term 1	Term 2	Term 3	Term 4
PDHPE	We all belong How can we be inclusive and respectful?	Child Protection: Strengths and Strategies for Safety	Looking After Yourself What influences my decisions and actions to be healthy, safe and physically active?	Keeping myself and others safe How can I keep myself and others safe?
	How can I use tactics to be successful in games?	How can we demonstrate our understanding of movement to solve challenges?	How can I take action to enhance my own and others' health, safety, and participation in physical activity?	Zing Activ-Dance What different ways can we move our body?
Creative & Performing Arts	Visual Arts – Artists Music – Playing	Visual Arts – Artists Drama – Performing and interpreting drama	Visual Arts – Media Music – Singing	Visual Arts – Media Dance - Performing